

**VEHICLE** Ford Ranger Next Gen 2022+

**PRODUCT** Diff Drop

**PRODUCT CODE** DDRAN03

**NOTE** Suggested fitment to be completed by a qualified automotive technician

#### COMPONENTRY SUPPLIED:

- 1 x DDRAN03-1 Front Diff Mount (1)
- 1 x DDRAN03-201 Spacer (2)
- 1 x DDRAN03-3 Top Diff Mount (3)

#### HARDWARE SUPPLIED:

- 1 x M10x100LG (4)
- 1 x M10 Washer OD 50mm, 3 thk (5)

#### TOOLS REQUIRED:

- Spanners
- Ratchets And Sockets
- Associated Basic Hand Tools



1. Jack up and support vehicle in a suitable position to allow easy access to the underneath.

2. Remove any bash plates fitted to vehicle.

3. Support differential appropriately with a jack, or similar, to allow movement of the differential when installing new hardware.

4. Remove rear upper diff mount, 2x Top bolts can be accessed through engine bay.  
See figure 1

5. Loosen 1x driver side diff mount bolt (leave bolt in).  
See figure 2



Figure 1



Figure 2

**VEHICLE** Ford Ranger Next Gen 2022+

**PRODUCT** Diff Drop

**PRODUCT CODE** DDRAN03

**NOTE** Suggested fitment to be completed by a qualified automotive technician

#### COMPONENTRY SUPPLIED:

- 1 x DDRAN03-1 Front Diff Mount (1)
- 1 x DDRAN03-201 Spacer (2)
- 1 x DDRAN03-3 Top Diff Mount (3)

#### HARDWARE SUPPLIED:

- 1 x M10x100LG (4)
- 1 x M10 Washer OD 50mm, 3 thk (5)

#### TOOLS REQUIRED:

- Spanners
- Ratchets And Sockets
- Associated Basic Hand Tools



6. Remove 4x bolts and front lower diff mount from chassis, discard.  
See figure 3

7. Loose fit Roadsafe front lower diff mount using 4x existing bolts.  
See figure 4

8. Loose fit Roadsafe spacer on driver side diff mount, using longer bolt and washer.

9. Install Roadsafe upper diff mount with supplied bush and tighten.

10. Tighten all remain mount bolts

11. Re-install bash plates



Figure 3

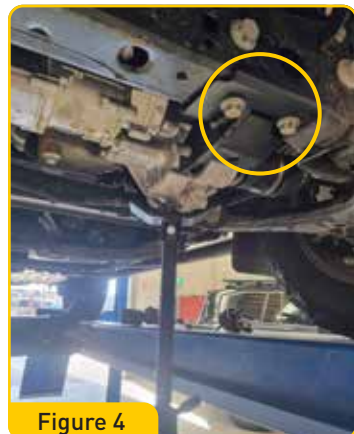


Figure 4

#### BOLT TORQUE SPECS

	GR8.8	GR10.9	GR12.9
<b>M6</b>	8-13 Nm	12-21 Nm	14-24 Nm
<b>M8</b>	19-30 Nm	29-43 Nm	33-51 Nm
<b>M10</b>	41-60 Nm	59-85 Nm	65-94 Nm
<b>M12</b>	71-105 Nm	102-150 Nm	114-164 Nm
<b>M14</b>	112-168 Nm	161-240 Nm	182-265 Nm
<b>M16</b>	175-260 Nm	250-371 Nm	282-406 Nm